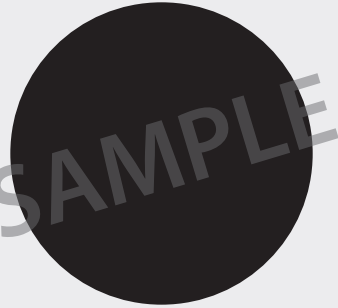
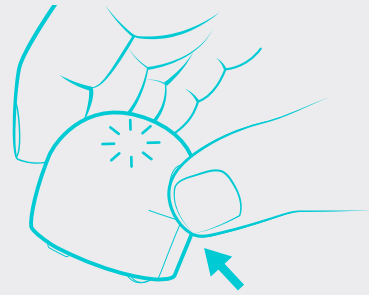


PAPER CALIBRATION

1 Use a black dot slightly bigger than Ozobot to calibrate. If you are using markers, create a similar sized calibration dot using a black marker.

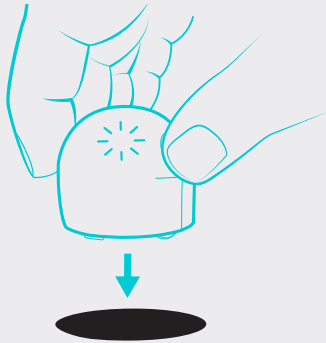


2



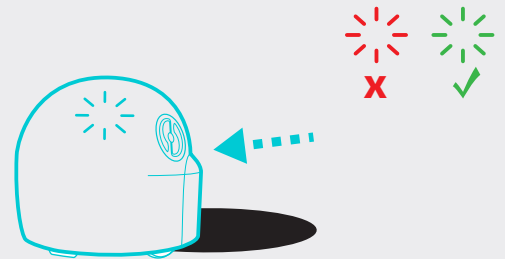
Hold down the power button on Ozobot for 2 seconds until the top LED light flashes white.

3



Quickly place Ozobot in the middle of the black calibration dot and let go.

4



If calibration is successful, Ozobot will move and then blink green. Start over if Ozobot blinks red.

DRAWING LINES



Too Thin!



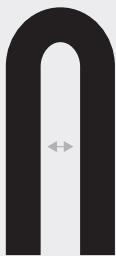
Too Thick!



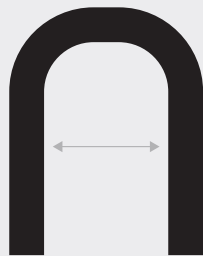
Inconsistent!



Just Right



Too Close!



Just Right



Too Sharp!



Just Right



Just Right

DRAWING CODES



X
Codes on colored lines



X
Different sizes



X
White spaces



X
Overlapping colors



X
Too dark



X
Single color squares larger than 1/4"



✓
Single color squares approx 1/4"
Codes on black lines

MARKERS

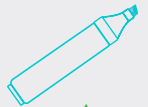
To draw any ozocode, you will need a combination of black, red, green and blue markers.



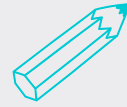
X
Dry Erase



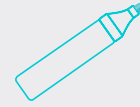
X
Crayons



✓



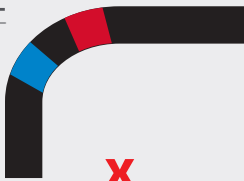
X
Colored pencil



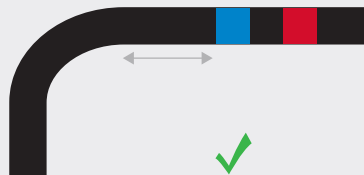
X
Highlighter

✓
Ozobot Markers
Crayola Classic
Crayola Pastels
Sharpie Chisel Tips
(use light green and light blue)

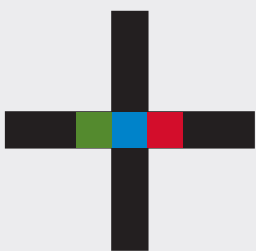
CODE PLACEMENT



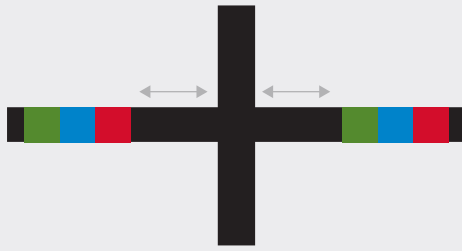
X
Codes on corners



✓
Keep codes on straight lines away from corners



X
Too close to intersection



✓
Place codes away from intersections



X
Codes too close



✓
Codes at least 1" apart



✓
Two-color codes need to be at line end



✓
All other codes need black line before and after

STICKERS



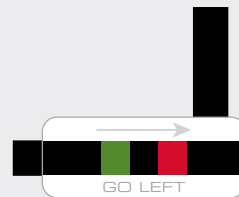
X
Codes on colored lines



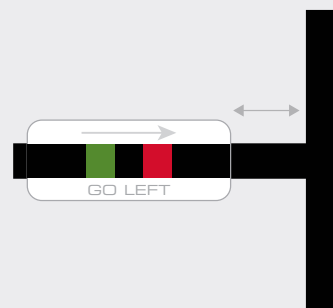
X
Codes on corners



X
Not lined up



X
Too close



✓
Align with straight, black lines
At least 1-inch from corners, intersections, and other codes

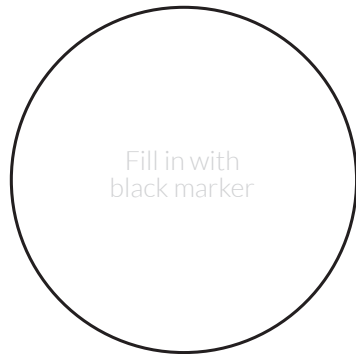
These calibration dots can be re-used for play on paper with Ozobot. **Cut along the dotted lines and fill circles in with black marker.** You may keep these for calibration in later sessions.

Note: Do not laminate as Ozobot cannot properly calibrate on a laminated surface.

OZOBOT CALIBRATION DOT

Calibrate when:

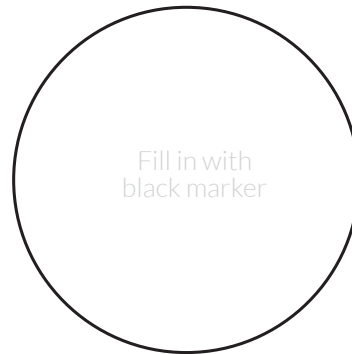
- You begin playing with Ozobot
- You change play surfaces
- Lighting conditions change drastically



OZOBOT CALIBRATION DOT

Calibrate when:

- You begin playing with Ozobot
- You change play surfaces
- Lighting conditions change drastically



OZOBOT CALIBRATION DOT

Calibrate when:

- You begin playing with Ozobot
- You change play surfaces
- Lighting conditions change drastically

