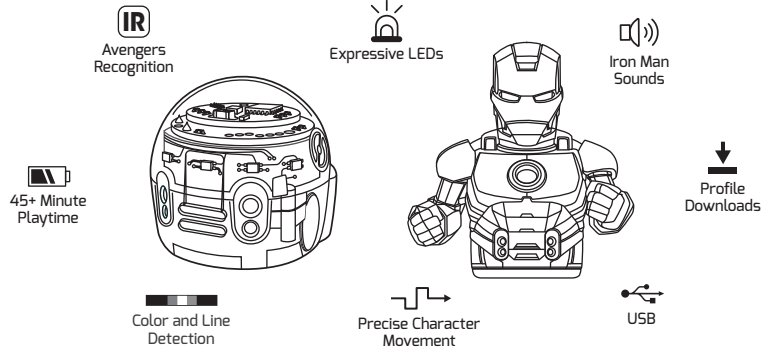




# Marvel's The Avengers for Ozobot Evo OWNER'S MANUAL

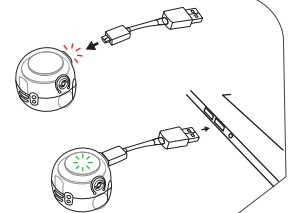


## 1 Get to Know EVO and Your AVENGER



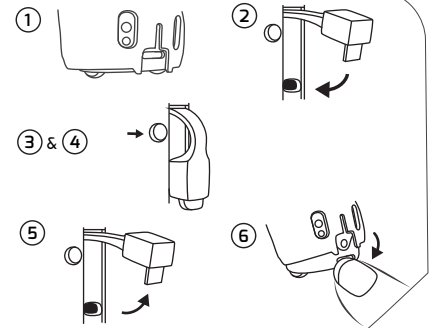
## 2 Charge

Evo comes partially charged. Get a full charge for maximum playtime. Your Action Skin gets its power from Evo. Remove the Action Skin for charging. Plug the USB Cable into Evo's Micro USB Port. Plug the other end of the USB Cable into any USB port or power adapter. All 5 of Evo's lights turn green when fully charged. When a red light flashes on Evo's back side, it is time to charge again.



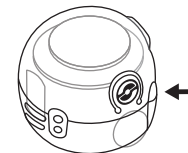
## 3 Power ON/OFF (Evo and Action Skin)

1. Align the Action Skin with Evo's wheel covers, then push it onto Evo.
2. Plug the Skin's USB Connector into Evo's Micro USB Port.
3. Press and quickly release the Skin's Power Button to turn on.
4. Press and quickly release the Power Button again to turn off.
5. To remove the Action Skin, unplug the USB Connector.
6. Hook your nail into the horizontal groove just below it, on Evo's back side. Pull Evo free.



## 4 Power ON/OFF (Evo-only)

1. Press and quickly release Evo's Power Button to turn on.
2. Evo will light up and begin interacting with you right away. For the Evo Owner's Manual, go to [ozobot.com/manuals](http://ozobot.com/manuals).
3. Press and quickly release the Power Button again to turn off.



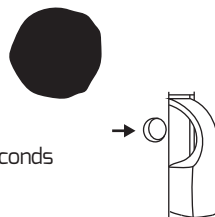
## 5 CALIBRATE CALIBRATE CALIBRATE

Evo reads patterns and colors using optical sensors on its bottom side. Calibrate Evo's sensors:

- Every time you get ready to use Evo (with or without Action Skin)
- When you change playing surfaces or lighting conditions
- If the bot's behavior is inconsistent

### CALIBRATE ON PAPER (with or without Action Skin)

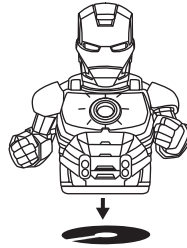
1. Draw a solid circle slightly larger than your bot with a black marker.
2. Press and hold the Power Button for 2 seconds until your Evo or Avenger lights up white.



5

## CALIBRATE Calibrate CALIBRATE

3. Release the Power Button and place your bot in the middle of the black circle.



4. Your bot will flash green if calibration is successful.  
-If your bot flashes red, start over from Step 1.

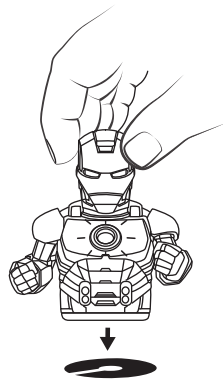
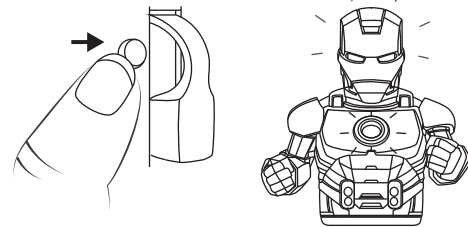


### CALIBRATE ON THE FIELD SIMULATOR (with Action Skin)

1. Make sure your Action Skin is connected and powered on.

2. Press and hold the Power Button for 2 seconds until your Avenger lights up white.

3. Release the Power Button and place your Avenger on the Playfield starting spot.



4. Your Avenger will flash green if calibration is successful. After a few seconds, your Avenger will begin exploring the Field Simulator.



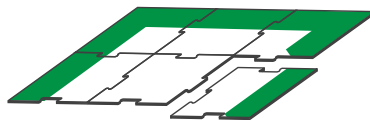
Get more calibration tips at [ozobot.com/calibration](http://ozobot.com/calibration).

6

## Quick Start (with Action Skin)

1) **EXPLORE** – navigate the Field Simulator

Assemble the 9-piece Field Simulator (included in the Master Pack) with green side up.



Calibrate your Avenger Profile (see 'Calibrate on the Field Simulator').



# Marvel's The Avengers for Ozobot Evo OWNER'S MANUAL



## 6 Quick Start (with Action Skin)

As your Avenger explores the Field Simulator, observe the behaviors that red, green, blue and other colors call for. Your Avenger Profile is pre-programmed to respond to these colors. When you master programming with OzoBlockly, you can change up which colors command which character behaviors.

Interact with your Avenger's proximity sensors: Put your hand behind the bot to speed things up, or in front of it to pause.

### 2) CREATE – code your Avenger Profile with colors

Evo and your Avenger Profile can be controlled with short sequences of color called OzoCodes. OzoCodes can control all of the bot's behaviors, from lights and sounds to speed and direction.

Draw a long black line, then the Tornado OzoCode below. Finish with more black line.



Place your Avenger Profile on the line, and it will use optical sensors to read the code and respond.

To draw and create with all of the OzoCodes, see our Drawing Basics Page and OzoCode Reference Chart. Share your creations at [community@ozobot.com](mailto:community@ozobot.com)!

### 3) CONNECT – chat and compete with friends and unlock new Avenger content

Download the free Ozobot Evo app on a compatible iOS or Android device.

Enable Bluetooth on your device. Make sure your Action Skin is connected and powered on.



Open the Ozobot Evo App and install any updates.

The app guides you as you:

1. Claim and name your Evo
2. Find and add friends
3. Communicate with OzoChat and Ozojis
4. Begin Stark Academy training with the blue side of the Field Simulator (included in the Master Pack)
5. Earn achievements to unlock new Avenger content

For more information, visit [ozobot.com/apps](http://ozobot.com/apps).

### 4) PROGRAM – unleash your Avenger's full potential with block-based programming

With OzoBlockly, drag and drop blocks of code to program your Avenger's lights, voice and behaviors. Use OzoBlockly programs to customize your Avenger Profile, complete challenges and learn introductory to advanced programming.



Access the OzoBlockly web editor and learn more at [ozoblockly.com](http://ozoblockly.com).



# Marvel's The Avengers for Ozobot Evo OWNER'S MANUAL



## 7 Take Care of EVO

Ozobot Evo is a high precision robotic device. Use Evo with care to maintain functionality and operational longevity.

### **Sensor Calibration**

For optimal performance, calibrate Evo's sensors every time you use it or change playing surfaces or lighting conditions (**See Calibrate, Calibrate, Calibrate**).

### **Contaminants and Liquids**

Evo is designed for tabletop play in clean environments free of dust, dirt, food and liquids. Exposure to contaminants can diminish performance or permanently damage Evo's components.

### **Do Not Disassemble**

Any attempt to disassemble Evo and its internal modules may cause irreparable damage and will void any warranties, implied or otherwise.

### **Do Not Abuse**

Dropping or applying excessive force to Evo may cause permanent damage to its housing, drive train and sensors.

## 8 ADDITIONAL Information

PLEASE RETAIN THIS FOR FUTURE REFERENCE

### **Limited Warranty**

Ozobot limited warranty information is available online at [ozobot.com/support/warranty](http://ozobot.com/support/warranty).

### **Battery Warning**

To reduce risk of fire or burns, do not attempt to open, disassemble, or service the battery pack. Do not crush, puncture, short external contacts, expose to temperatures above 60°C (140°F), or dispose of in fire or water.

Battery chargers used with the device are to be regularly examined for damage to the cord, plug, enclosure and other parts and, in the event of such damage, must not be used until the damage has been repaired. Battery is 3.7V, 135mAh (3.7\*0.135=0.5Wh). The max operating current is 150mA.

### **Questions about your Evo?**

Visit [ozobot.com/faq](http://ozobot.com/faq) or email us at [support@ozobot.com](mailto:support@ozobot.com).